

KENWOOD TM-281E

2 M. FM MOBILE TRANSCEIVER

OUTPUT 65 W



This new Kenwood TM-281E is the successor of the TM-271E.

Features

- 65 Watt RF Output
- Rugged Construction to US MIL-STD and Euro E-Mark Specifications
- DTMF Microphone
- Alpha-tagged Memories
- High-Quality Front Mounted Loudspeaker
- Built-In CTCSS/DCS Encoder/Decoder

Specifications

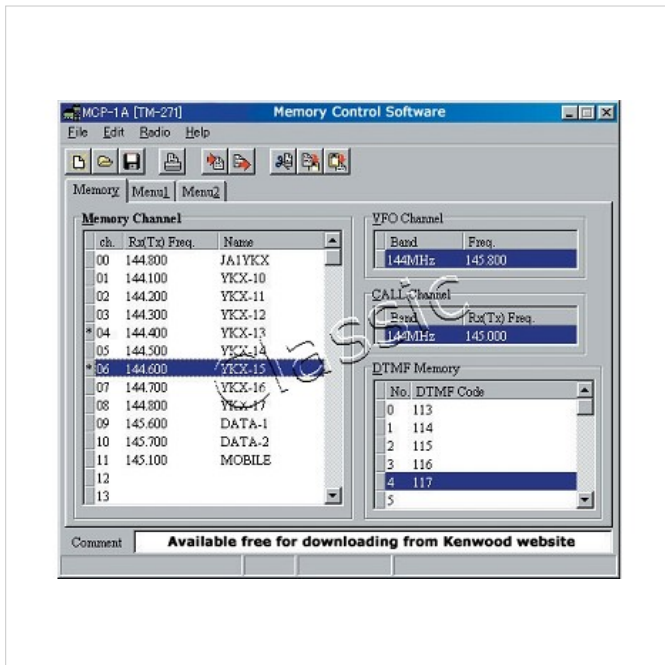
RF Output Power (approx.) - High : 65 W
 RF Output Power (approx.) - Low : 25 W
 Transmitter Modulation : Reactance modulation
 TX Frequency Coverage - VHF : 144 - 146 MHz
 RX Frequency Coverage - VHF : 136 - 174 MHz
 Antenna Impedance - 50 Ohm : Yes
 Audio Output Power : More than 2 W (5% Distortion)
 Weight : 1.13 kg (approx.)
 Current Drain - RX : Less than 1 A
 Current Drain - TX : Less than 14 A (Hi-Power), Less than 8 A (Low-Power)
 Dimensions : 160 mm (W) x 43 mm (H) x 137 mm (D) - excluding projections
 Frequency Stability : ± 2.5 ppm (-20 °C to +60 °C)
 Modes - F3E (FM), F2D : Yes
 Operating Temperature Range : -20 °C to +60 °C
 Power Requirement - 13.8 VDC $\pm 15\%$: Yes
 Receiver Intermediate Frequency - 1st IF : 49.95 MHz
 Receiver Intermediate Frequency - 2nd IF : 450 kHz
 Receiver Selectivity - Narrow : More than 10 kHz at -6 dB, Less than 24 kHz at -60 dB
 Receiver Selectivity - Wide : More than 12 kHz at -6 dB, Less than 30 kHz at -60 dB
 Receiver Sensitivity - Narrow : Less than 0.22 μ V at 12 dB SINAD
 Receiver Sensitivity - Wide : Less than 0.18 μ V at 12 dB SINAD
 Receiver Squelch Sensitivity : Less than 0.1 μ V
 Transmitter Maximum Frequency Deviation - Wide : ± 5 kHz

Construction Features

"E-Mark" Certification : Yes
 MIL-STD 810 C/D/E/F : Yes
 Tough Construction
 RJ-45 Modular Microphone Plug : Yes

General Features

High-Quality Front Speaker : Yes



Article id: KENWOOD TM-281E

Price: € 239,00 ex VAT € 197,52

KENWOOD TM-281E

2 M. FM MOBILE TRANSCEIVER OUTPUT 65 W

High Frequency Stability : Yes
DTMF Microphone : Yes
Multiple Scan Functions : Yes
1750 Hz Tone Burst Function : Yes
Illuminated Front Panel Keys : Yes
CTCSS Encoder/Decoder : Yes
DCS Encoder/Decoder : Yes
Memory Channels : 201 Channels
Memory Channels with Alpha-tagging : 100 Memory Channels
PC Programmable Memories : Yes
Power-On Message : Yes
Wide/Narrow Deviation Selection : Yes
Automatic Simplex Checker : Yes
Auto Repeater Offset : Yes
Reverse Repeater Checker : Yes
Key Beep On/Off : Yes
Auto Power Off : Yes
Time-Out Timer : Yes
Channel Display Mode : Yes
Busy Channel Lock-out : Yes
Memory Channel Lock-out : Yes
MR-Shift : Yes
Direct Frequency Entry : Yes
Key Lock : Yes
Alphanumeric LCD Display : Yes
Menu System for individual set-up : Yes

Article id:	KENWOOD TM-281E	
Price:	€ 239,00	ex VAT € 197,52