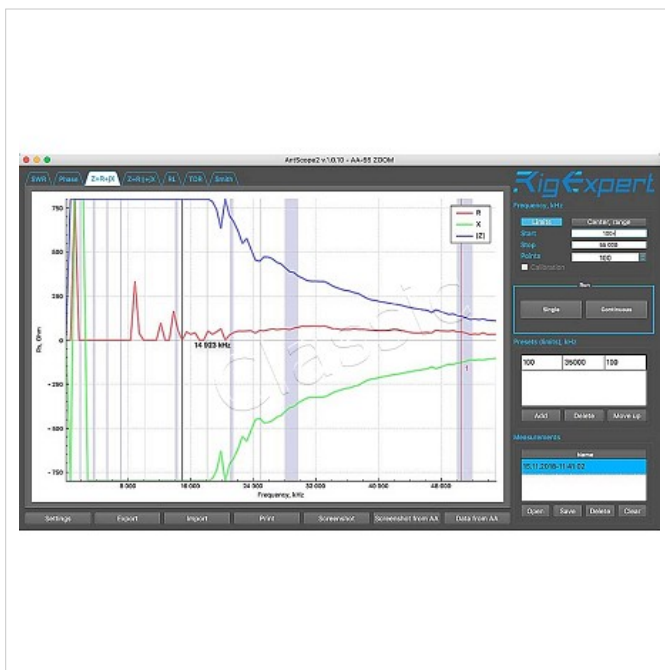


RIGEXPERT AA-55 ZOOM BLE

HF/50 MHz SWR ANALYZER 0,06-55 MHz - BLUETOOTH

NOW STANDARD INCL. BLUETOOTH!



The RigExpert AA-55 ZOOM BLE analyzer is designed for measuring SWR (standing wave ratio), return loss, cable loss, as well as other parameters of cable and antenna systems in the range of 60 kHz to 55 MHz.

A built-in ZOOM capability makes graphical measurements especially effective.

An integrated Time Domain Reflectometer mode can be used to locate a fault within the feedline system.

The following tasks are easily accomplished by using this analyzer:

- Rapid check-out of an antenna
- Tuning an antenna to resonance
- Comparing characteristics of an antenna before and after specific event (rain, hurricane, etc.)
- Making coaxial stubs or measuring their parameters
- Cable testing and fault location, measuring cable loss and characteristic impedance
- Measuring capacitance or inductance of reactive loads

Specifications AA-55 ZOOM BLE

Frequency range : 0,06 to 55 MHz

Frequency entry : 1 kHz resolution

Measurement : For 25, 50, 75, 100, 150, 200, 300, 450 and 600-Ohm systems
SWR measurement range : 1 to 100 in numerical modes, 1 to 10 in chart modes

SWR display : Numerical or analog indicator

R and X range : 0...10000, -10000...10000 in numerical modes, 0...1000, -1000...1000 in chart modes

Display modes : SWR at single or multiple frequencies

: SWR, return loss, R, X, Z, L, C at single frequency

: SWR chart, 100 points

: R, X chart, 100 points

: Smith chart, 100 points

: Return loss chart, 100 points

: Cable tools (loss and characteristic impedance)

Optional open-short-load calibration.

Non Volatile memory : 10 slots to save measurement results

RF output : Connector type: SO 239 (PL-female)

: Output signal shape: square, 0,06 to 55 MHz

: Output power: +13 dBm (at 50 Ohm load)

Power : Two 1.5V alkaline batteries, type AA (included with analyzer)

: Two 1.2V Ni-MH batteries, type AA (not included with analyzer)

: Max. 4 hours of continuous measurement, max. 2 days in stand-by mode

Article id: **RIGEXPERT AA-55 ZOOM BLE**

Price: **€ 295,00** **ex VAT € 243,80**



RIGEXPERT AA-55 ZOOM BLE

HF/50 MHZ SWR ANALYZER 0,06-55 MHZ - BLUETOOTH

NOW STANDARD INCL. BLUETOOTH!

when fully charged batteries are used

: When the analyzer is connected to a PC or a DC adapter with USB socket, it takes power from these sources

Interface : 320x240 color TFT display

: 6x3 keys on the water-proof keypad

: Multilingual menus and help screens

: USB connection to a personal computer

Dimensions : 103 x 207 x 37 mm (4.1 x 8.1 x 1.4 in)

Operating temperature : 0...40 °C (32...104 °F)

Weight : 310 g (10.9 oz) w/o batteries

Warranty : 2 years

Included in delivery are:

- RigExpert AA-55 ZOOM BLE
- USB cable
- Soft case
- User Manual
- Alkaline batteries 2 x AA

Specifications are subject to change without notice.

You can find detailed information and screenshots in the brochure and manual for download.

Article id: RIGEXPERT AA-55 ZOOM BLE

Price: € 295,00 ex VAT € 243,80

Classic International B.V.

Zuidhoven 9 G

6042 PB Roermond

The Netherlands

info@classicinternational.eu

<https://www.classicinternational.eu>

Copyright © 2021 Classic International B.V.

Printing errors reserved

Date: 17-01-2021