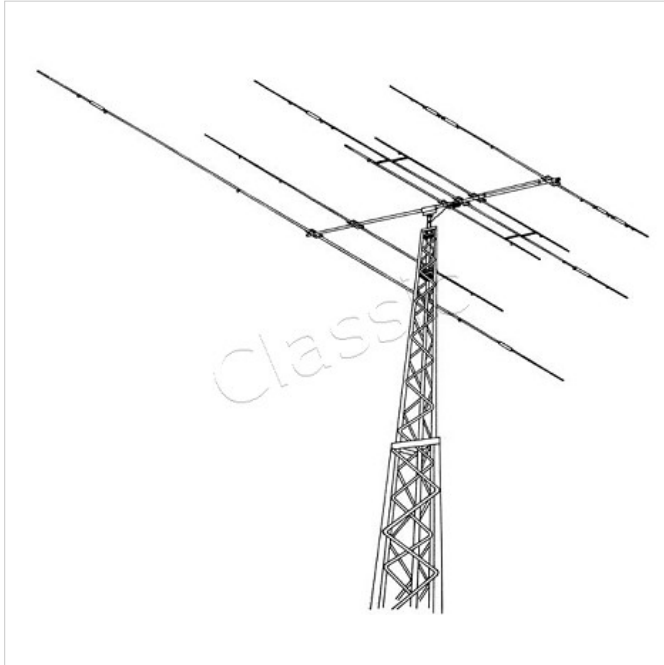


# HYGAIN EXP-14

## BEAM 4 EL. | 10/15/20 M.



The Hy-Gain Explorer 14 is a very unique 4-element, three band beam antenna designed for broadband, high performance, high efficiency operation on the Amateur 10, 15, and 20 meter bands. The boom length of 14 feet 11/2 inches (4.17 m) and a longest element of 31 feet 6 inches (9.6 m) combine for a modest 17 foot 3 inch turning radius, small enough for most city lots. Broadbanding is accomplished through the use of a monoband reflector on 10 meters, a duoband reflector on 15 and 20 meters and a very unique driven element system called the Para-Sleeve.

The Explorer 14 utilizes a new concept in driven element design, called the Para-Sleeve System (Patent No. 4,604,628). Basically, the design consists of an "open-sleeve dipole" that has been optimized for maximum bandwidth and directivity within a Yagi-Uda configuration of parasitic elements. The open-sleeve dipole has evolved from the coaxial sleeve dipole; however, it is much easier to tune and exhibits less wind loading. The ParaSleeve System consists of a trapped driven element for 15 and 20 meters, electrically connected to the balun and Beta-Match; and a set of two parallel sleeve elements for 10 meters.

### Specifications

Bands : 14/21/28 MHz  
Elements : 4  
Gain : 5,95 dBd  
F/B ratio : 25 dB  
Boomlength : 4,27 m.  
Reflectorlength : 9,60 m.  
Turning Radius : 5,26 m.  
Windload : 0,7 m2  
Mast Diameter : 49 - 64 mm  
Balun : Hygain BN-86 included  
Max. Power : 1,5 kW PEP  
Weight : 20,4 kg

**Article id:** HYGAIN EXP-14

**Price:** € 795,00

**ex VAT € 657,02**